

Workplace Health and Safety Snapshot for Ontario Mining Sector in 2019



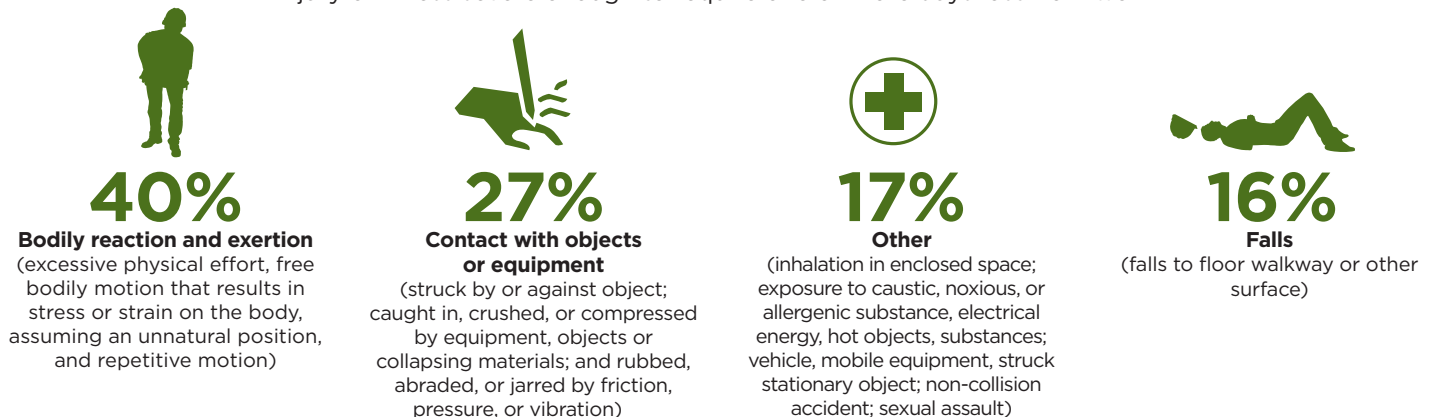
23,455

Full-time employees

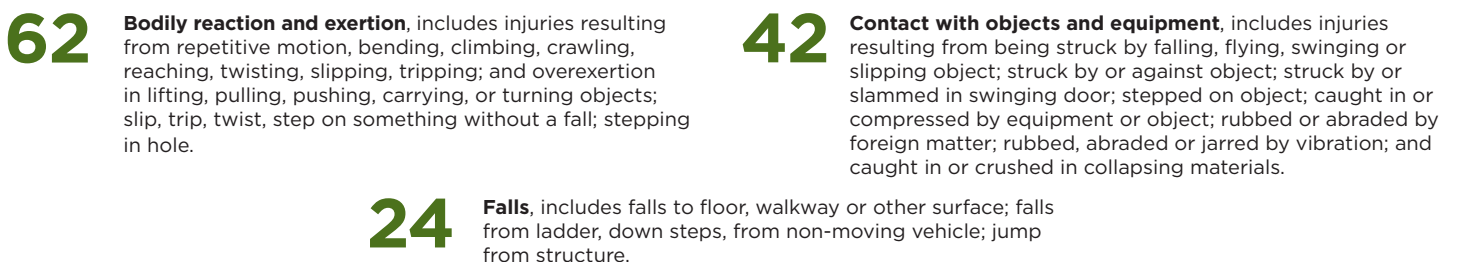


Events resulting in lost-time injury or illness

Injury or illness severe enough to require one or more days lost from work

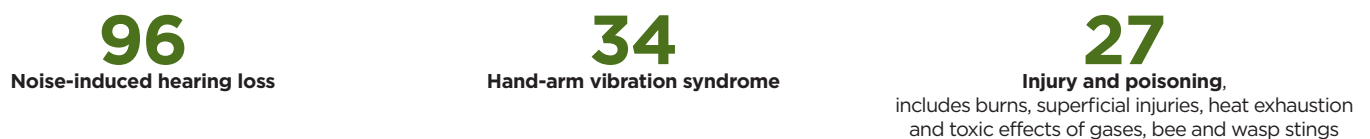


Most common lost-time injuries



Top 3 Occupational Diseases

Based on approved WSIB claims for healthcare, being off work, loss of wages, or permanent disability



*Disease fatality claims with a fatality effective date of 2019. Source: WSIB Enterprise Information Warehouse as of March 2020. RG 110, 113, 119. WSN June 2020.



1-888-730-7821 Toll-free Ontario

705-474-7233

workplacesafetynorth.ca



For more detailed statistics and trends

workplacesafetynorth.ca/resources/mining-statistics

Overview of Joint Health and Safety Committee certification training

Focus on workplace-specific hazards - JHSC Part 1, 2, and Refresher training

JHSC Certification: Part One (three days)

(Disponible en français)

This mandatory course provides participants with an understanding of how to recognize, assess and control workplace hazards, the rights and duties of certified members, and how to conduct effective workplace inspections and incident investigations.

JHSC Certification: Part Two (two days)

Focusing on the concepts of recognition, assessment, and control of hazards, and evaluation of the hazard controls, participants learn how to apply these concepts to a minimum of six hazards relevant to their own workplaces. In addition, learners practise drafting action plans and recommendations for the employer.

By the end of the two-day course, participants will:

- Review material covered in Certification Part One
- Understand the hazard-related concept of recognize, assess, control and evaluate (RACE)
- Understand key hazards specific to the sector
- Use various tools to help recognize, assess and control hazards, and evaluate hazard controls
- Understand the role of the Joint Health and Safety Committee in relation to the Internal Responsibility System.

Key hazards

- Dust and particulates
- Mine ventilation
- Fatigue, stress and shiftwork
- Ground control
- Water management
- Underground haulage
- Surface mobile equipment
- Electrical hazards
- Lock out
- Falls from elevations

Also Available

Safety culture and program assessment

Based on findings from the Institute for Work and Health, there are ten occupational health and safety factors predictive of a company's health and safety performance. Using these factors, WSN developed the Climate Assessment and Audit Tool (CAAT) to properly assess the maturity of a firm's health and safety culture and system. Ask your WSN Health and Safety Specialist for more information.

Health and Safety Representative Basic Training

Under the Occupational Health and Safety Act, employers are required to ensure that workplaces with 6 to 19 workers have a worker Health and Safety Representative (HSR). To help small businesses comply with the law and strengthen their internal health and safety culture, the Ministry of Labour and Ontario health and safety associations (including Workplace Safety North) have developed an e-learning program that provides HSRs with the knowledge and skills they need to perform their legislated duties effectively.

About Workplace Safety North

Your local health and safety partner

An independent not-for-profit, Workplace Safety North (WSN) is one of four health and safety associations in Ontario, and the only one headquartered in the north.

WSN provides province-wide government-approved workplace health and safety services for forest products and mining sectors, as well as for businesses and communities across northern Ontario.

With health and safety specialists located across the province, WSN and its legacy organizations have been helping make Ontario workplaces safer for more than 100 years.

WSN is a leading provider of health and safety services, and businesses and communities call upon WSN for expert advice and training. For more information, visit workplacesafetynorth.ca.



1-888-730-7821 Toll-free Ontario
705-474-7233
workplacesafetynorth.ca

